

Welcome to TurkoTek's Discussion Forums

[Archived Salons and Selected Discussions](#) can be accessed by clicking on those words, or you can return to the [Turkotek Home Page](#). Our forums are easy to use, and you are welcome to read and post messages without registering. However, registration will enable a number of features that make the software more flexible and convenient for you, and you need not provide any information except your name (which is required even if you post without being registered). Please use your full name. We do not permit posting anonymously or under a pseudonym, *ad hominem* remarks, commercial promotion, comments bearing on the value of any item currently on the market or on the reputation of any seller.

[Turkotek Discussion Forums](#) > [Rugs and Old Masters: An Essay Series](#) > [3. Geometric Rugs in Early Renaissance Paintings](#)

 **Curvilinear stem with leaves border**

Welcome, [Filiberto Boncompagni](#).

You last visited: December 12th, 2011 at 10:22 AM
[Private Messages](#): Unread 0, Total 2.

[User CP](#)

[Register](#)

[FAQ](#)

[Calendar](#)

[New Posts](#)


[Search](#)

[Quick Links](#)

[Log Out](#)



[Thread Tools](#) [Search this Thread](#) [Display Modes](#)

 December
10th, 2011,
04:10 PM

#1

[Yohann Gissinger](#)
Members

 **Curvilinear stem with leaves border**

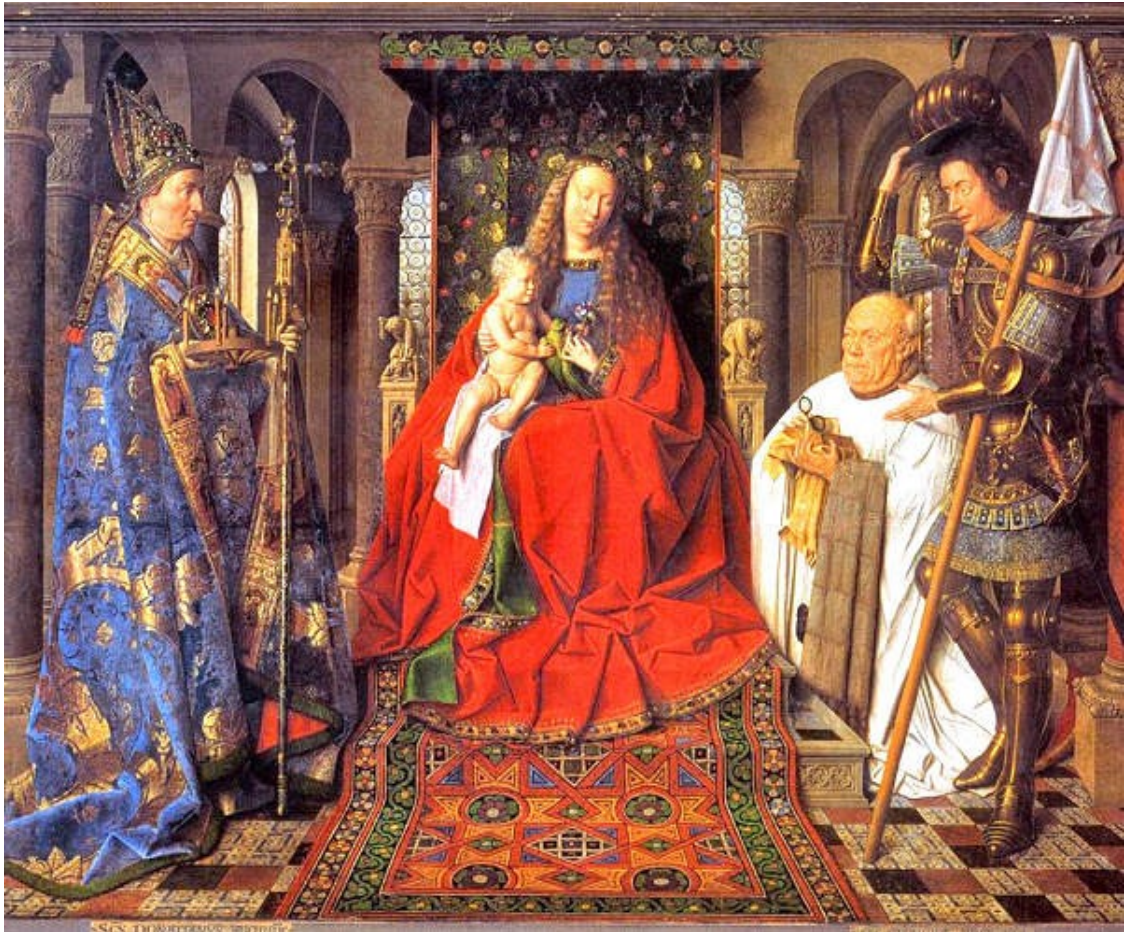
Hello to all,

Join Date: Jul
2008
Location: France
Posts: 5

To illustrate the Onno Ydema thesis (I haven't read it yet) in the sense of a western gothic border ornamentation style (fig 39, 40, 41)







There is an example of a spanish rug (still existing?) with a similar border:

LÁMINA XLIII



DETALLE DE ALFOMBRA GÓTICA DE CAMPO CENTRAL DECORADO CON CARDOS,
EN 1933 PERTENECIA A LA COLECCIÓN DEL CONDE DE WELCZECK.
Reproducida del Catálogo de la Exposición de Alfombras Antiguas Españolas de FERRANDES.

and for the tile joke a typical gothic style pavement from the "biblioteca Antonio Devoto" in Spain:



Best regards,
Y😊

Last edited by Yohann Gissinger; December 11th, 2011 at 02:04 AM.



December 12th, 2011,
05:51 PM

#2

[Pierre Galafassi](#)

Members

Join Date: Oct 2009
Posts: 15



Hi Yohann,

The «chain-mail» motif, prominent in the field of this peculiar group of rugs, apparently existed in both European- (Roman & medieval) and Asian / Islamic- traditions.

The example below shows this motif in another Roman mosaic (villa La Olmeda, Pedrosa della Vega, Palencia.). In its simplest form, as here, the «chain-mail» seems to have been rarely used as field motif in rugs though.



*

Another curiosity of this (carpet-like) Roman mosaic is the use of the swastika symbol, which one might think to be an essentially Indian- and, most generally, East-Asian religious symbol. The swastika is also the unique motif in the strange rug of FIG 65 of main essay (Osma Master 1450).

